

Engine Degreaser

CARQUEST Engine Degreaser powerfully removes grime. A clean engine runs cool and looks new. Use on most metal surfaces including automobiles, boats, power mowers, machinery, garden, farm and construction equipment.

DIRECTIONS: *Read entire label before using this product. Follow all directions in numerical order.*

1. Engine must be off and cool.
2. Remove air cleaner cover and filter. Cover air intake system (or carburetor), distributor, all exposed wiring and electronic components. Limit rinse water contact on all underhood wiring and electronic sensors to prevent performance problems.
3. Spray Engine Degreaser on dry engine.
4. Allow to penetrate and clean for 10 to 15 minutes. Brush heavy deposit areas if required.
5. Before rinsing, place a rinse collection receptacle underneath the engine. Disposal on ground is prohibited in California.
6. Rinse from the top down using a fine stream of water. Use a minimum amount of water. Do not dispose of rinse water on the ground, in sewers, floor drains or other waterways.
7. Rinse water must be disposed of in conformance with local, state and federal regulations.
8. Remove all covers from carburetors, distributors, air intake system and electronic components. Replace all removed parts. Immediately start engine and let idle for 10-15 minutes to dry.
9. Do not apply while equipment is energized.

IMPORTANT: Wipe product immediately from exterior painted surface to avoid streaking and dewaxing. Avoid use of Engine Degreaser on asphalt black top or other surfaces affected by organic solvents.

WARNING: Contains Petroleum distillates 64742-47-8, 68476-34-6, 2-Butoxyethanol 111-76-2, Xylene 1330-20-7, Ethylbenzene 100-41-4 and Carbon dioxide 124-38-9. Do not puncture, incinerate or store can above 120°F. Exposure to high temperature may cause can to burst. Do not place in direct sunlight or near any heat source. Contents are flammable. Vapors can accumulate and create a flammable atmosphere. Do not use near open flame or other sources of ignition. Avoid continuous breathing of vapor and spray mist. Avoid contact with skin and eyes. Overexposure to liquid or vapors can cause eye and skin irritation, irritation to upper respiratory tract, and central nervous system effects such as headache, dizziness, drowsiness, confusion, or possibly unconsciousness. Deliberate misuse by concentrating and inhaling the contents can be harmful or fatal. Use with adequate ventilation. Open doors and windows or use other means to ensure a fresh air supply during use and while product is drying. Vapors are heavier than air and can accumulate in low areas. If you experience any symptoms listed on this label, increase ventilation or leave the area. Product may pose an aspiration hazard if swallowed. This product contains chemicals known to the State of California to cause cancer, birth defects and other reproductive harm. **FIRST AID:** In case of eye or skin contact, flush with water for 15 minutes. If too much is breathed, remove to fresh air. If swallowed, DO NOT induce vomiting. For severe overexposure, call a physician immediately. For additional information, consult the Material Safety Data Sheet for this product. **DISPOSAL:** All used and unused product should be disposed of in conformance with local, state and federal regulations. Do not dump in sewers, on the ground, or into any body of water.

KEEP AWAY FROM CHILDREN

ELECTRICAL SHOCK HAZARD: This can will conduct electricity. Keep away from all live electrical sources including Battery Terminals, Solenoids, Electrical Panels and other electronic components. DO NOT use with ignition in "ON" position. Failure to observe this warning may result in serious injury from flash fire and/or electrical shock.

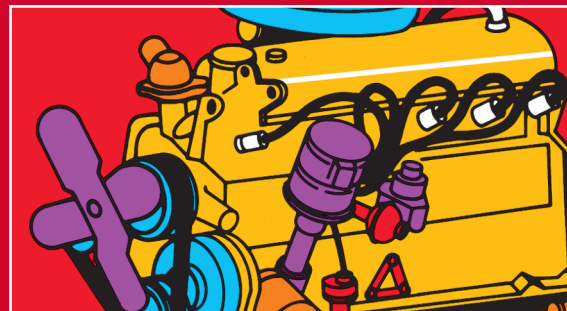
OK for use in California and OTC States.

©2010 CARQUEST CORP.
Raleigh, NC 27604
800-521-3168 Technical Information

Made in USA
10A
CRC#0567H



Heavy Duty Engine Degreaser



- Removes Grease and Grime
- Easy to Use
- Spray On – Rinse Off
- Leaves No Residue



No. 1030CA (CCM) • Net Wt. 15 oz. (425 g)

DANGER: FLAMMABLE. HARMFUL OR FATAL IF SWALLOWED. CONTENTS UNDER PRESSURE.
Read warnings on back panel.